

# Seam test station

INSTRUCTION MANUAL

The reprinting, copying or translation of PFAFF Instruction Manuals, whether in whole or in part, is only permitted with our previous authorization and with written reference to the source.

**PFAFF Industriesysteme  
und Maschinen AG**

Hans-Geiger-Str. 12 - IG Nord  
D-67661 Kaiserslautern

		Page
	<b>Contents .....</b>	<b>Page</b>
<b>1</b>	<b>Proper use.....</b>	<b>4</b>
<b>2</b>	<b>Specifications .....</b>	<b>5</b>
<b>3</b>	<b>Disposal of Machine .....</b>	<b>6</b>
<b>4</b>	<b>Explanation of symbols.....</b>	<b>7</b>
<b>5</b>	<b>Controls .....</b>	<b>8</b>
5.01	Summary of controls (Version without pneumatics connection) .....	8
5.02	Summary of controls (Version with pneumatics connection) .....	9
<b>6</b>	<b>Preparation .....</b>	<b>10</b>
6.01	Setting the test material thickness .....	10
6.02	Filling the water tank .....	10
<b>7</b>	<b>Testing.....</b>	<b>11</b>
7.01	Testing (Version without pneumatics connection) .....	11
7.02	Testing (Version with pneumatics connection).....	12
<b>8</b>	<b>Maintenance.....</b>	<b>13</b>
8.01	Maintenance intervals.....	13
8.02	Lubrication .....	13
8.03	Manometer replacement.....	13
<b>9</b>	<b>Parts list .....</b>	<b>14</b>

### 1 Proper use

The seam connections, which are sealed with a seam sealing tape, are checked at the seam test station for water-tightness in accordance with DIN 20811.

The test is conducted for outdoor wear, ski, surfing and diving suits, and for shoes.



Any and all uses of this machine which have not been approved of by the manufacturer are considered to be inappropriate! The manufacturer cannot be held liable for any damage caused by the inappropriate use of the machine!

The appropriate use of the machine includes the observance of all operational, adjustment, maintenance and repair measures required by the manufacturer!

## 2 Specifications

Max. clearance underneath test plates: ..... approx. 38 mm

Fill water: ..... distilled water

Dimensions:

Length: ..... approx. 450 mm

Width: ..... approx. 300 mm

Height ..... approx. 620 mm

Connection data:

Pressure min.: ..... 1 bar

Pressure max.: ..... 6 bar

Net weight: ..... approx. 7,1 kg

Gross weight (mit Karton): ..... approx. 11,1 kg

### 3 Disposal of Machine

- Proper disposal of the device is the responsibility of the customer.
- The materials used for the machine are steel, aluminium, brass and various plastic materials. The electrical equipment comprises plastic materials and copper.
- The device is to be disposed of according to the locally valid pollution control regulations; if necessary, a specialist is to be commissioned.



Care must be taken that parts soiled with lubricants are disposed of separately according to the locally valid pollution control regulations!

## 4 Explanation of symbols

In this instruction manual, work to be carried out or important information is accentuated by symbols. These symbols have the following meanings:



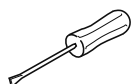
Note, information



Cleaning, care



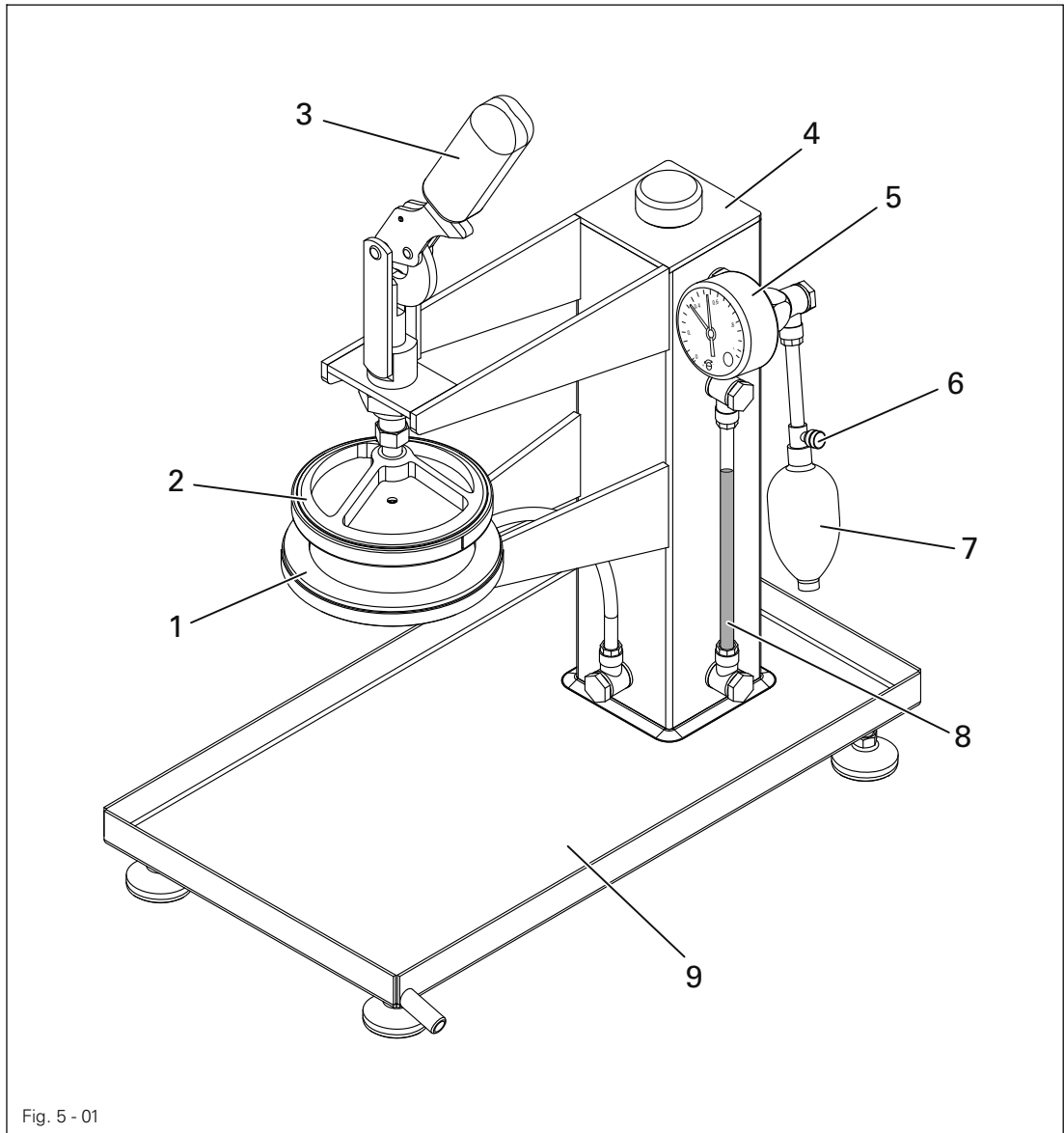
Lubrication



Maintenance, repairs, adjustment, service work  
(only to be carried out by technical staff)

## 5 Controls

### 5.01 Summary of controls (Version without pneumatics connection)



- Pressure plate 1.
- Clamping plate 2.
- Material clamping lever 3.
- Water tank 4.
- Manometer 5.
- Bleeder screw 6.
- Pump bellow 7.
- Water level display 8.
- Water collection tank 9.



5.02 Summary of controls (Version with pneumatics connection)

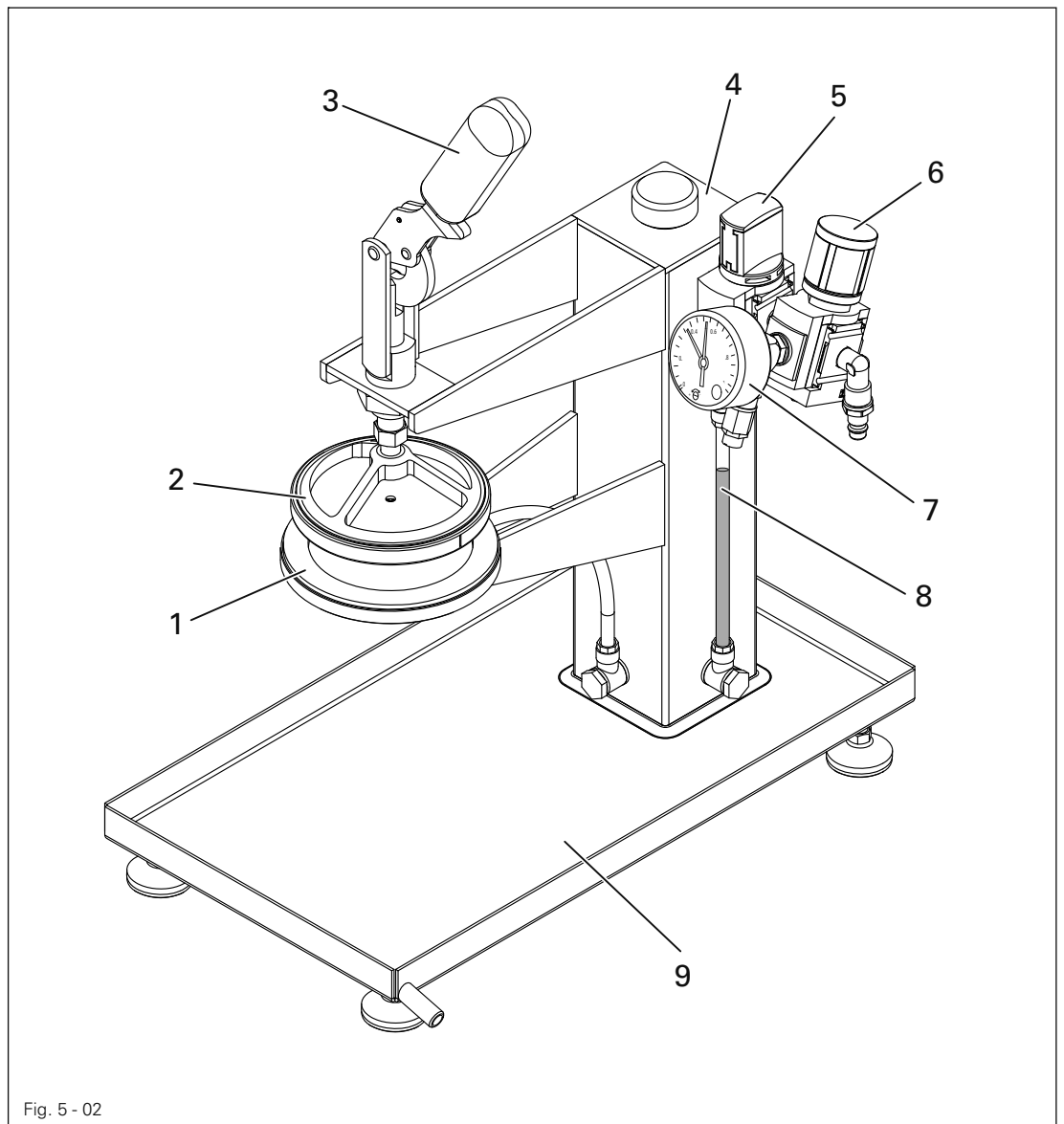
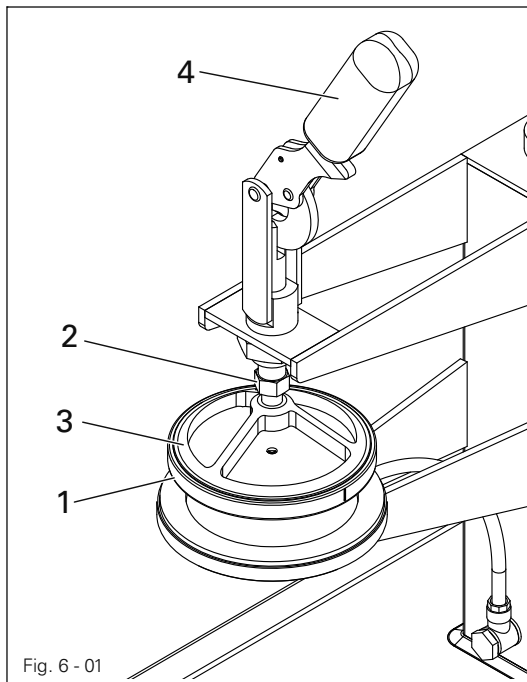


Fig. 5 - 02

- Pressure plate 1.
- Clamping plate 2.
- Material clamping lever 3.
- Water tank 4.
- Air stop cock 5.
- Pressure regulator 6.
- Manometer 7.
- Water level display 8.
- Water collection tank 9.

## 6 Preparation

### 6.01 Setting the test material thickness

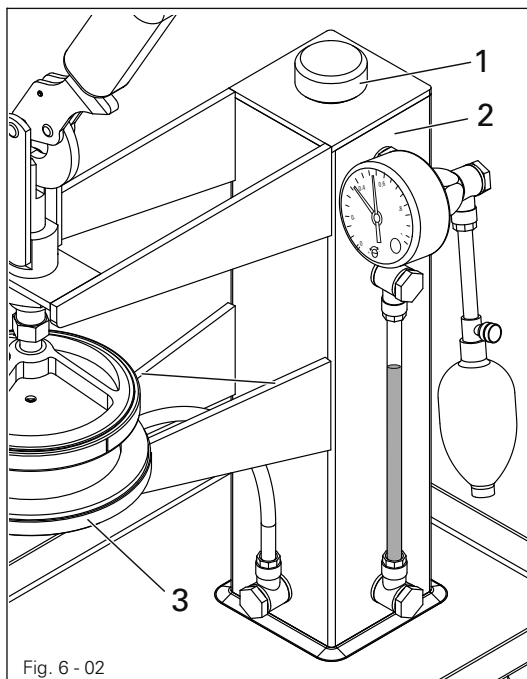


- Screw on union nut 1.
- Insert the plastic plate or the lattice supplied depending on the material, and screw in place with the union nut 1.
- Loosen counter nut 2 and set the material thickness to be processed by turning the clamping plate 3.



The material thickness should be set in such a way that no water can escape during the test process while the clamping lever 4 is engaged, but also that the material is not marked with pressure marks.

### 6.02 Filling the water tank



- Unscrew screw 1 from water tank 2.
- Fill the tank 2 with water, while ensuring that it cannot escape from the pressure plate 3.
- Replace the screw 1.



Only use distilled water to prevent lime scale build-up.

## 7 Testing

## 7.01 Testing (Version without pneumatics connection)

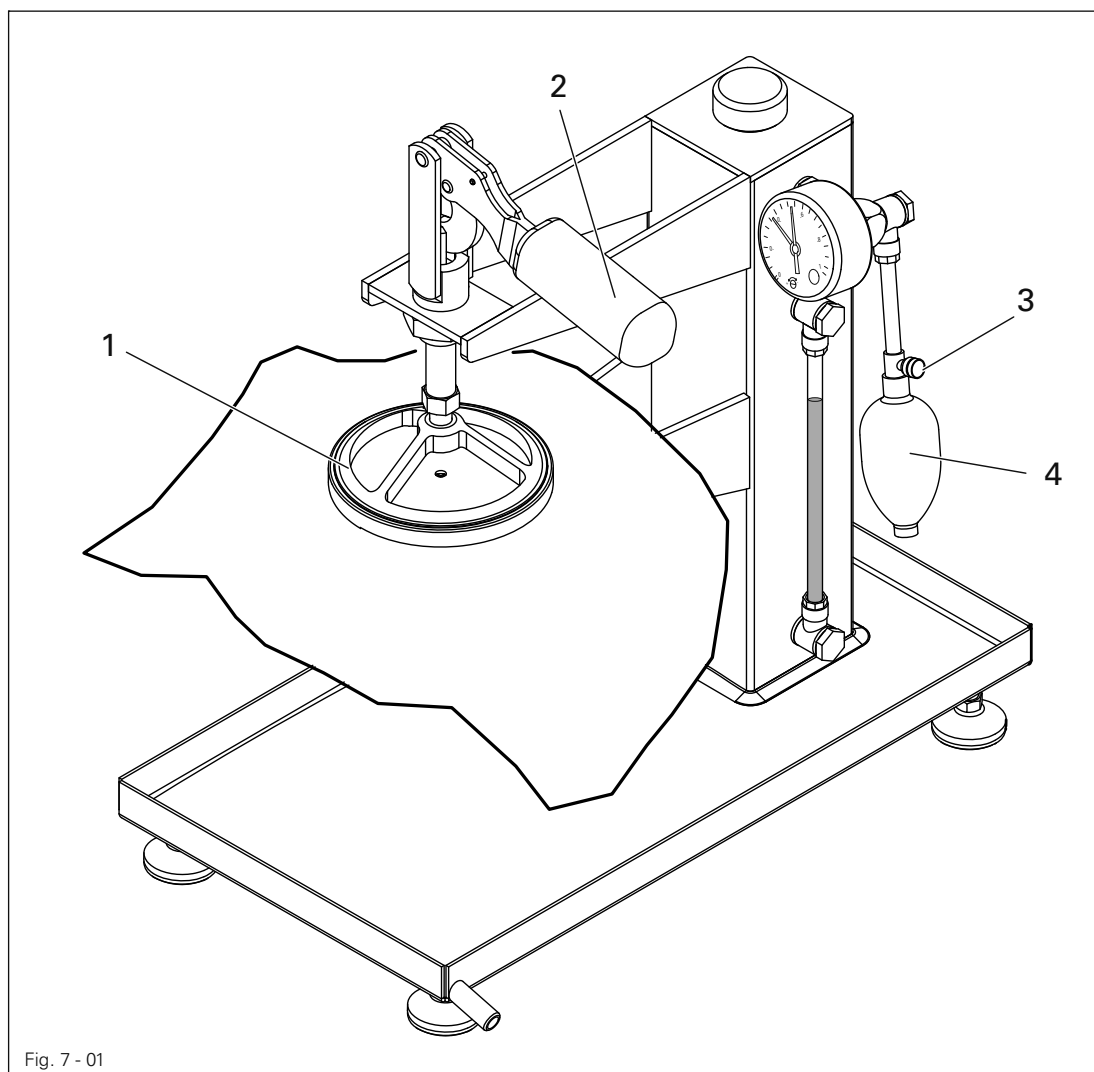


Fig. 7 - 01

- Place the material for testing underneath the clamping lever 1 and press down on the lever 2.
- Close bleeding screw 3.
- Generate the desired test pressure via the pump bellow 4.



Open the bleeding screw 3 after the test process to depressurise the system.

- Release the lever 2 and remove the material.

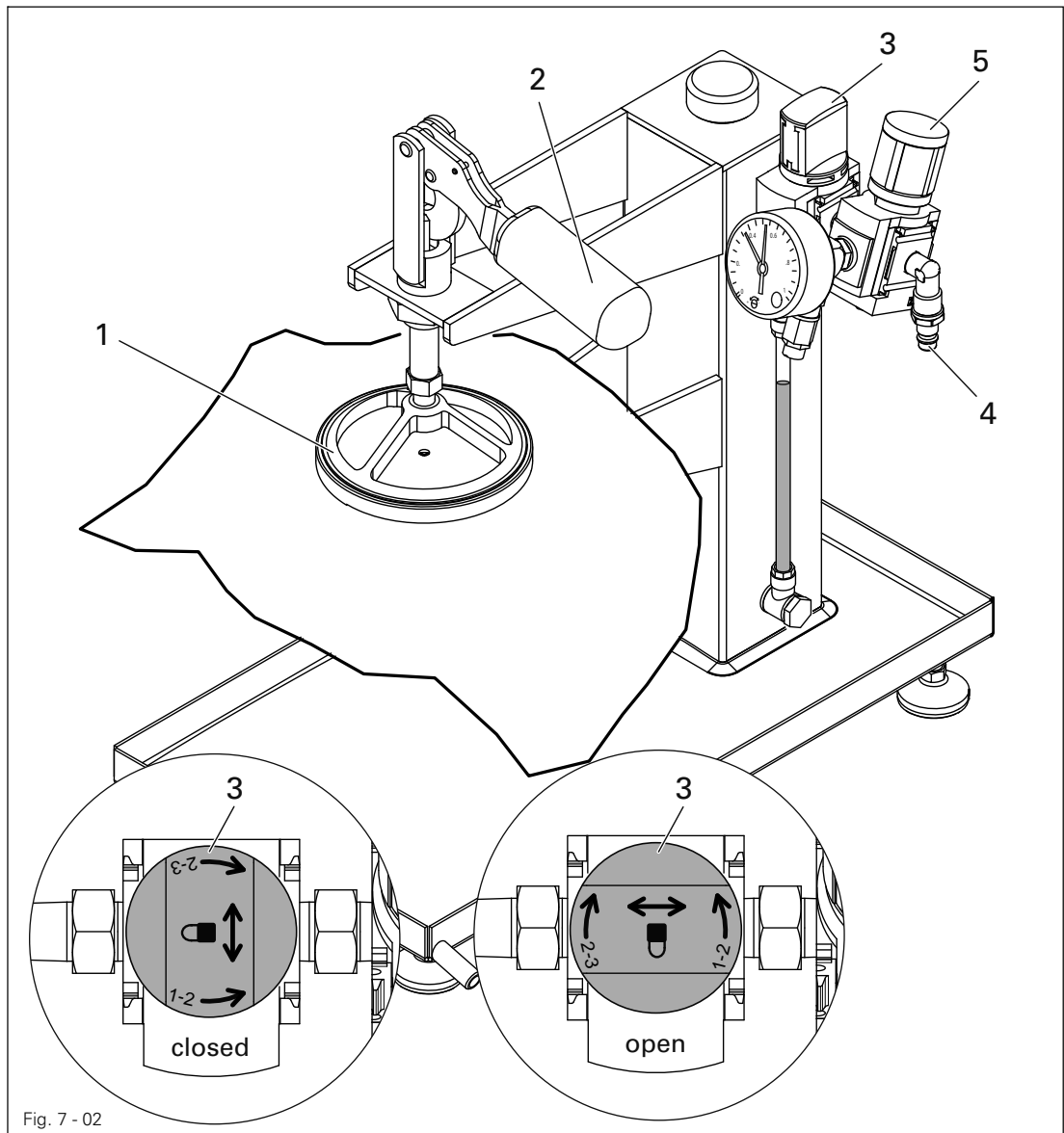


Fig. 7 - 02

- Place the material for testing underneath the clamping plate 1 and press down on the lever 2.
- Close the air stop cock 3.
- Connect compressed air at pressure reducer 4.
- Set the desired pressure for testing on the regulating nut 5 of the pressure reducer.



Once the test process has been completed, close the air stop cock 4 to depressurise the system.

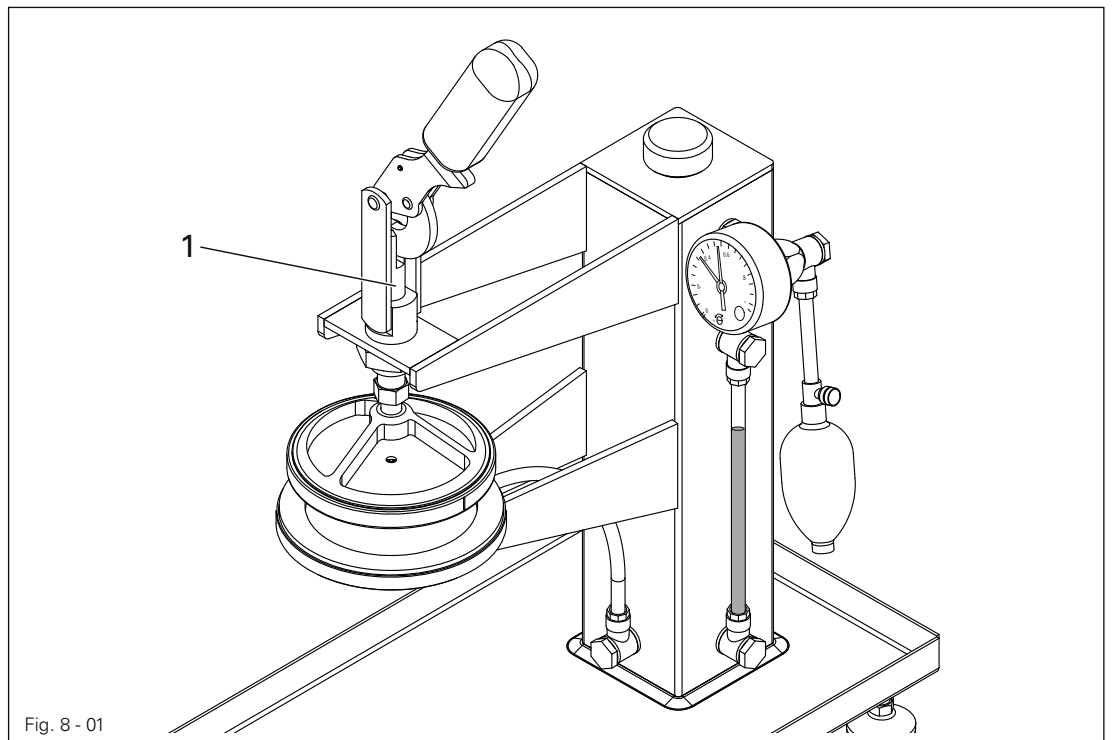
- Release the lever 2 and remove the material.

8 Maintenance

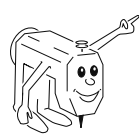
8.01 Maintenance intervals

Lubrication .....	annually
Manometer replacement .....	annually

8.02 Lubrication



- Lubricate guide 1 with a little grease once a year.

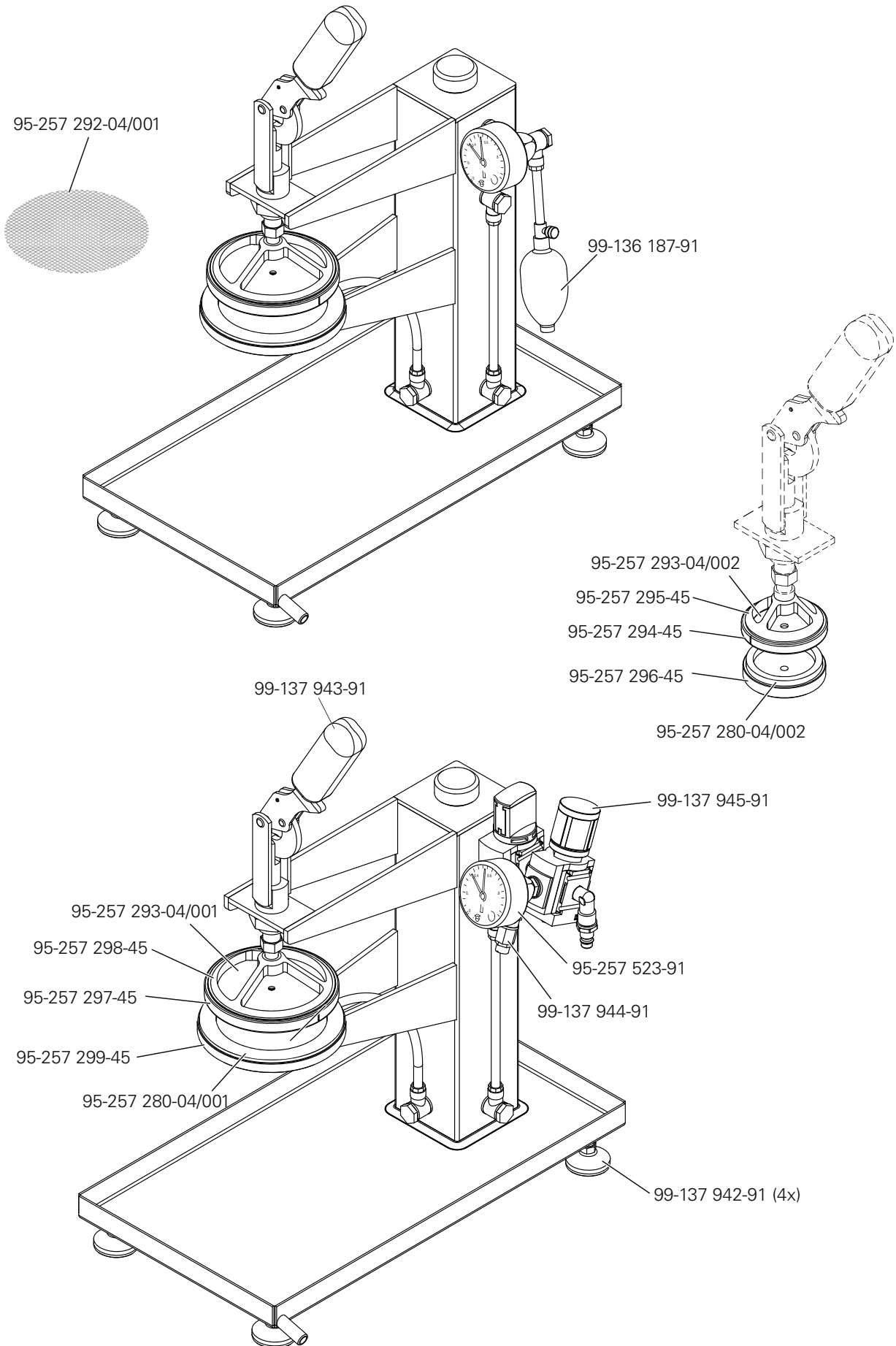


Only use Gleitmo 585 M heavy duty grease,  
part no. 280-1-120 269.

8.03 Manometer replacement

- The installed manometer has been tested and should be replaced once a year.
- State the item no. 95- 257 523 91 for ordering a tested manometer.

9 Parts list







**Europäische Union**  
Wachstum durch Innovation – EFRE



## PFAFF Industriesysteme und Maschinen AG

Hans-Geiger-Str. 12 - IG Nord  
D-67661 Kaiserslautern

Phone: +49-6301 3205 - 0  
Fax: +49-6301 3205 1386  
E-mail: [info@pfaff-industrial.com](mailto:info@pfaff-industrial.com)

### Hotlines:

Technical service: +49-175/2243-101  
Application consultancy: +49-175/2243-102  
Spare-parts hotline: +49-175/2243-103

Printed in Germany